

Central Cemetery - Spring Glen Utah

SURVEYOR'S CERTIFICATE

STATE OF UTAH)
 COUNTY OF CARBON) ss.

WE, MARTIN MILLARICH AND ANTON DUPIN, DO HEREBY CERTIFY THAT WE ARE THE PRESIDENT AND SECRETARY, RESPECTIVELY, OF THE THER DRUSTVO, SLOVENSKA NARODNA PODPORA JEDNOTA, ZAPADNA SLOVENSKA, JUZOSLAVANSKA SLOVENSKA JEDNOTA IN SLOVENSKA SVORODNOMISLNA PODPORA ZVEZDA, KNOWN AS THE CENTRAL CEMETERY ASSOCIATION AND THAT BY OUR AUTHORITY THIS PLAT WAS MADE, NAMED AND DESIGNATED.

Anton Dupin SECRETARY
Martin Millarich PRESIDENT

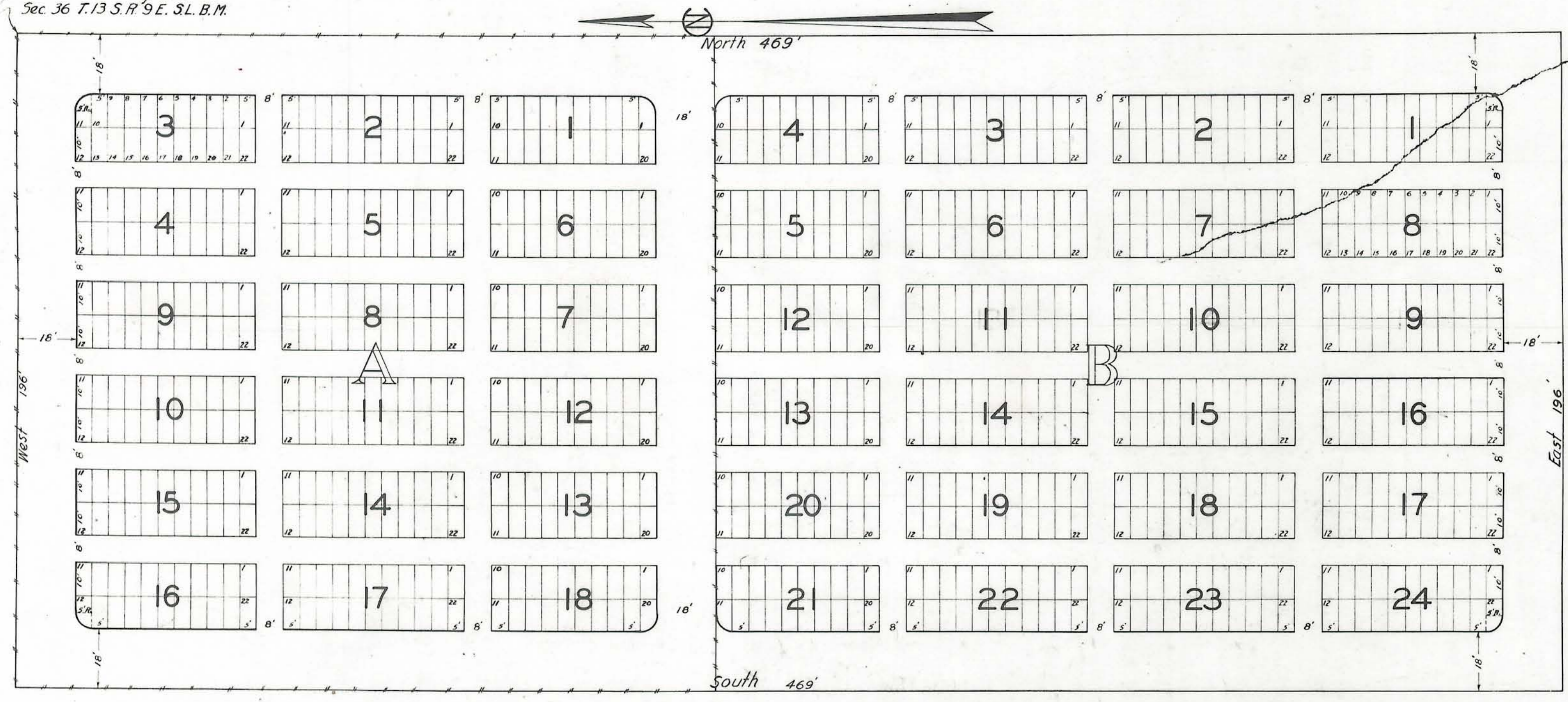
ON THIS 24th DAY OF FEBRUARY A.D. 1931, PERSONALLY APPEARED BEFORE ME MARTIN MILLARICH AND ANTON DUPIN, SIGNERS OF THE ABOVE INSTRUMENT, AND DULY ACKNOWLEDGED TO ME THAT THEY ARE THE PRESIDENT AND THE SECRETARY, RESPECTIVELY, OF THE CENTRAL CEMETERY ASSOCIATION AND THAT THEY EXECUTED THE FOREGOING FOR AND IN BEHALF OF SAID CENTRAL CEMETERY ASSOCIATION OFFICE AND BY VIRTUE OF THEIR OFFICE.

PLAT OF CENTRAL CEMETERY SPRING GLEN, UTAH.

Scale 1 in. = 20 Ft.

SUBSCRIBED AND SWORN TO before me this 19th day of February, 1931.

Pl 1980 Ft. West of E. 1/4 Cor
 Sec 36 T.13 S. R. 9 E. S. 1. B. M.



Central Cemetery
 Spring Glen
 Utah